

# American Association of University Women

## Ballwin-Chesterfield Branch

### March, 2011 Newsletter



Vol. 31 No. 7 30th Anniversary Year  
AAUW ADVANCES EQUITY FOR WOMEN AND GIRLS THROUGH  
ADVOCACY, EDUCATION, PHILANTHROPY AND RESEARCH  
Visit our website at [aauwballwin-chesterfield.org](http://aauwballwin-chesterfield.org)

10-Star  
Branch of  
AAUW-MO  
AAUW  
Galaxy Award  
Winner

**PLEASE NOTE:** In case of inclement weather, if Parkway or Rockwood School Districts are closed, Ballwin-Chesterfield meetings will be cancelled.

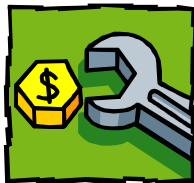
**March Branch Meeting**  
**Thursday, March 10**  
**Trinity Lutheran Church**  
**14088 Clayton Rd. (at Woods Mill)**

**8:45 AM-Social & Sign-ups**  
**9:30 AM: Business Meeting**  
**10:30 AM: Speaker**  
**11:30 AM:Adjourned**

**SPEAKER:**

**DR. STUART GREENBAUM**  
**Professor, Olin Business School,**  
**at Washington University**

**"Major Forces Influencing Our  
Economic Well-Being."**



#### Hospitality

**Coordinating Hostess: Nancy Beckmann**  
**Committee: Rose Bingaman, Jane Clendenin, Susan Fenwick, Helen Fick, Margo Foster, Susan Haynes, Doris Nistler, Kim Redeker, Judy Stagoski, Rosann Swaringim,**

#### **PRESIDENTS' CORNER**

**March, a Month to Remember that "Our History Is Our Strength" – Women's History Month**

*"How important it is for us to recognize and celebrate our heroes and she-roes!" - Maya Angelou, African American poet*

We all can recite a long list of women we would expect to be inducted into a "Women's Hall of Fame," from Abigail Adams instructing John to "Remember the Ladies, and be more generous and favorable to them than your ancestors" to Rosa Parks sitting tight and saying, "The only tired I was, was tired of giving in." Women's stories of determination, courage, and creativity have enriched America's narrative in a myriad of ways. Without women in our history, we might have missed such varied gifts as a printed copy of the *Declaration of Independence* (Mary Katharine Goddard, 1777), women in the military (Deborah Sampson, 1782), the American Red Cross (Clara Barton, 1881), AAUW (college alumnae, 1881), voting rights (19<sup>th</sup> Amendment, 1920), or even the lovely dream ballet in *Oklahoma!* (Agnes de Mille, choreography, 1943).

Consider two women from our distant past: one, a West-African slave; the other, "a model of Puritan womanhood." Both serve as sources of strength as we work to shape a better world for women and girls today.

Dorothy Creole: (ca. 1608) Dorothy entered New Amsterdam from a slave ship. She worked for Dutch wives, married, became a godmother, adopted her godchild, and after 15 years, petitioned the Dutch West India Company for freedom. She won! Although it was "half-freedom," it gave other slaves hope for a way out of slavery. She helped to found a town known as "Land of the Blacks." Dorothy had the determination to fight against her odds.

Anne Hutchinson: (1591-1643) Anne bore 15 children, learned midwifery, and, as an eloquent speaker, began her own prayer meetings in Boston. Anne overstepped herself since women were to be silent in public meetings and was declared a "dangerous woman who must be stopped." At her trial, Anne mounted a skillful defense, but her intelligence and eloquence rankled the court which banished her for "being a woman not fit for our society." She was imprisoned and sent away. Anne had the courage to speak her mind in a society that gave women no public voice.

*Continued on the next page*

#### **INSIDE....**

- P. 2-6 AAUW, IBC AND BRANCH NEWS**
- P. 7 UPDATES FROM OUR BRANCH CHAIRS**
- P. 8-9 DOLLARS FOR SCHOLARS EVENTS**
- P. 9-11 SPECIAL INTEREST GROUPS**
- P. 12 MARCH CALENDAR**

**BOARD MEETING – Thursday, March 3, 9:30 AM at Trinity Lutheran Church.** All elected offices and appointed chairs should attend. Please contact Bette Bude (314-878-7642, [dabbl@sbcglobal.net](mailto:dabbl@sbcglobal.net)) if you cannot be there.

# AAUW, IBC & BRANCH NEWS

## AAUW BALLWIN-CHESTERFIELD OFFICERS AND CHAIRS

### ELECTED OFFICERS:

**Presidents:** Bette Bude & Marcia Block

**Vice Presidents-Program:** Suzanne Couch & Erlaine Eltomi

**Vice Presidents-Membership:** Yvonne Morrison & Joan Lunt

**Secretary:** Judy Stagoski      **Treasurer:** Carol Thomas

### APPOINTED OFFICERS:

**Bylaws/Parliamentarian:** Doris Nistler

**Directory:** Dodie Barnes & Rosemary Manley

**Dollars for Scholars:** Barbara Tackitt & Judy Green

**Educational Foundation (EOF):** Jan Horner & Mary Kay Wolfe

**Fall Brunch:** Jayne Kasten & Phyllis Oakes

**Historian:** Carol Derington

**Holiday Auction:** Pat Shores & Harriett Hirschfeld

**Hospitality:** Diane Correll & Carol LeBegue

**International Relations:** Marian Bauer

**Legal Advocacy Fund:** Barbara Butchart & Ruth Griffin

**Newsletter Editors:** Joyce Katz & Mary Jermak

**Public Policy:** Sandy Camillo & Teri Miller

**Publicity:** Pat Shores

**Recognition:** Julia Triplett

**Spring Luncheon:** Gloria Campion, Jane Miller & Diane Siegel

**Technology:** Joyce Katz

### APPOINTED CHAIRS:

**Advisor:** Mary Jermak      **Care Notes:** Yvonne Blair

**IBC:** Leslie Wier      **STEM:** Sandra Murdock

**Summer Picnic:** Susie Teicher & Jane Clendenin

For membership information, call Yvonne Morrison (636-391-6026) or Joan Lunt (636-527-7488).

The Ballwin-Chesterfield Branch Newsletter is published 10 times a year (each month except June and August) and mailed or e-mailed to each member. Your newsletter co-chairs are Joyce Katz (314-878-4521, [joyka234@aol.com](mailto:joyka234@aol.com)), and Mary Jermak (636-532-3040, [maryjermak@att.net](mailto:maryjermak@att.net)). Please e-mail articles if possible. You may phone articles in, or mail to Mary Jermak, 15231 Brightfield Manor Dr., Chesterfield, MO 63017. The deadline for articles for the April newsletter is March 10 (the 2nd Thursday).

Meeting Agendas and the Branch E-mail list are reserved for AAUW & branch business only!

**AAUW (IBC) DOWNTOWN LUNCH (3<sup>rd</sup> Tuesdays, 11:45 AM).** March 15: Cunetto House of Pasta, 5453 Magnolia (at Southwest Ave.) Contact Jean Shull (314-822-7821, [jshull2@mindspring.com](mailto:jshull2@mindspring.com)) for reservations.

**ADELANTE (IBC Book-of-the Month Club)**  
4<sup>th</sup> Thursdays, 1:30 PM, Borders Books on Olive St. Rd., Creve Coeur. March 24: Women's History Month-The Woman Behind the New Deal: The Life of Frances Perkins. FDR's Secretary of Labor and His Moral Conscience by Kirstin Downey will be reviewed by Lorna Anderson

## PRESIDENTS' CORNER (continued)

These women provide unique role models--women facing extraordinary changes and unrelenting challenges in their world of the 1600's. Almost 400 years later, we too live in a world of change and challenge. We, the women of AAUW Ballwin-Chesterfield, are up for the task of continuing the story, strong in conviction that we will make a difference for women and girls in the future.

*We never know how high we are*

*Till we are called to rise;*

*And then, if we are true to plan,*

*Our statures touch the skies.*

— Emily Dickinson, American poet

- Bette and Marcia

More stories abound at [www.archives.gov](http://www.archives.gov) and [www.nwhp.org](http://www.nwhp.org),

\*The National Women's History Project, a partner with AAUW.

**NOTE:** Be sure to join us on March 8, for a special International Relations lecture: *INTERNATIONAL WOMEN'S DAY: A CENTENNIAL RETROSPECTIVE* - see page 4 for details.

## SAVE-THE -DATE SPOT:

1. **April 30-May 1: AAUW-MO Conference at Tan-Tar-A** in Lake Ozark's Osage Beach. Details will be published in the AAUW-MO *Missouri in Motion*.

2. **Thursday, May 12 at 11:15 AM: AAUW BC's SPRING LUNCHEON EVENT** at Whitmoor Country Club. Reservations (\$24) begin at the March branch meeting. See p. 5

3. **June 16-19: AAUW National Convention in Washington DC.** See [aauw.org](http://aauw.org) for details, then contact Bette or Marcia for more financial information.

## NEW MEMBERS' ORIENTATION COFFEE – Wednesday, April 27, 1:30 PM, 15231 Brightfield Manor Drive, Chesterfield 63017 (Mary Jermak's home, 636-532-3040)

All new members (since October 27, 2010) are invited to attend the New Members' Orientation Coffee. Any new members who missed the last orientation are also welcome. Please RSVP to Joan (636-527-7488) or Yvonne (636-391-6026) if you plan to join us. This is a great opportunity to get acquainted with other new members and board members who will be there to explain goals and activities of the branch. We're looking forward to getting to know you better!

**DIRECTIONS:** From Hwy. 40 & the Clarkson/Olive intersection go North or East (away from Chesterfield Mall and towards Faust Park) and drive 1.1 miles to Nooning Tree. Turn right. and continue to roundabout and gate at Nooning Tree Enclaves. Go through gate to be on Brightfield Manor Dr. Continue to #15231 on the right.

- Joan Lunt and Yvonne Morrison,  
VP's, Membership

# AAUW, IBC and BRANCH NEWS (Continued)

## Did you know . . . ?

~~**Women's History Month** marks **March 8, 1857**, as a key event when NYC women factory workers staged a protest over working conditions.

~~Congress established the National Women's History Week in 1981 and expanded it to a month in 1987.

## ~~**Quantifying Women, 2008-2010:**\*

157.2 million – number of females in the U.S. to 153.2 males

Age 85+ - females outnumber males by two to one

\$36, 278 - the median earning of women 15+

\$.77 – women earn for every \$1 men earn

30% - percentage of women 25+ with a bachelor's degree

50% - percentage of college students who were women (08)

66% - women who voted in the 2008 election

59% - females 16+ in labor force

39% - females working in managerial, professional, and related occupations

14% - proportion of military who are female

3.1 million – girls in high school athletic programs

182,503 – females in the National Collegiate Athletic Association

Behind the numbers are the stories. How do these numbers help us to define our mission for the future?

\*Source – [www.census.gov](http://www.census.gov)

## RECOGNIZE OUTSTANDING MEMBERS: NOMINATE A MEMBER FOR BRANCH NAMED GIFT HONOR

**\*due no later than March 10\***

Each year our branch recognizes outstanding fellow members who are making (or have made) a significant contribution to the AAUW Mission and goals of our branch.

Perhaps you know of someone who was an enthusiastic and effective chair of a special event or fundraising activity or a member who can always be counted upon to work to further activities which promote the AAUW's Mission.

Members continually give generously of time and money to make our branch a warm, friendly, effective, and productive group - all under the banner of advancing AAUW's Vision and Value Promise. Let's recognize those among us whose service, leadership, and commitment especially deserve our thanks!

You may nominate as many members as you like. Past honorees are listed in your directory (a member may certainly be nominated again.)

Please use the suggested format given below and mail in as directed. If you prefer to send your nomination(s) by e-mail, please send to Mary Jermak ([maryjermak@att.net](mailto:maryjermak@att.net)).

Thank you! The 2010-2011 Named Gift Committee:

*Mary Jermak, Jan Horner, Joan Lunt, Yvonne Morrison, Mary Kay Wolfe*

## 2010 – 2011 NAMED GIFT HONOREE NOMINATION FORMAT AAUW BALLWIN-CHESTERFIELD BRANCH

A nominee for the Named Gift Honor must have shown service, leadership and commitment to AAUW and its Mission and to the Ballwin-Chesterfield branch. You may nominate more than one person using a separate sheet for each. All nominations are confidential and must be submitted to Mary Jermak, 15231 Brightfield Manor Dr., Chesterfield, MO 63017, no later than March 10, 2011.

On a blank sheet of paper please provide evidence of current and past service, leadership, and commitment to AAUW's Mission and to the branch. Please include dates, if known. **Use the suggested format below.**

Name of Nominee \_\_\_\_\_

Write your description of your nominee's past service and why you believe she should receive the Named Gift Honor this year.

Nominated by (your name) \_\_\_\_\_

# AAUW, IBC & Branch News (Continued)

## AAUW BRANCH DIRECTORY/SPRING UPDATE

A directory supplement has been sent to all members with this newsletter. It contains information that is new and updated since the December Directory Supplement.

We are now beginning to update pictures and information for the 2011-12 directory that will be published in September, 2011. If your picture is not yet in the directory or you would like a retake, please have Joyce Katz or Rosemary Manley take your picture at one of the branch meetings. You may also email or mail a picture to Joyce Katz, 234 Chamonix Court, St. Louis, 63141, [joyka234@aol.com](mailto:joyka234@aol.com). (Your picture will be returned to you).

- *Dodie Barnes and Rosemary Manley, Co-Chairs*

## TAX DEDUCTIBLE DUES NEWS:

Due to the reorganization of AAUW into a 501(c)(3) charitable organization at the national level, a portion of dues paid in 2009 are tax deductible. \$46 of the \$49 paid for national dues is tax deductible. State and local dues are not deductible. Be sure to tell your tax preparer.

## A SPECIAL TREASURER'S MESSAGE

The official deadline for membership dues for 2010-2011 is June 15. However, please consider paying your dues early! You will have the satisfaction of getting a necessary task "out of the way" and it will help the branch and the treasurer. **Regular member: \$81** (Association: \$49, State: \$10, Branch: \$22), **Dual members: \$22, Life Members: \$32**. Make your check payable to AAUW Ballwin-Chesterfield and mail to Carol Thomas, 18208 Ashford Oaks Drive, Glencoe, MO 63038. I will be collecting dues at the meetings beginning in March.

- *Carol Thomas*

## INTERNATIONAL RELATIONS LECTURE SERIES Tuesday, March 8, the Ethical Society, 9001 Clayton Rd, 10:45 AM

Come celebrate International Women's Day on March 8, 2011. Dr. Rosemary Feuer of Northern Illinois University will speak on INTERNATIONAL WOMEN'S DAY: A CENTENNIAL RETROSPECTIVE. Dr. Feuer is an award-winning author and producer. She will enlighten and inform us on gains made by women over the past 100 years. Don't miss this program! Hope to see many of you there--bring a friend.

- *Marian Bauer*

*The American Association of University Women (AAUW) has been named a top-rated nonprofit in two categories through GreatNonprofits' reviews of charitable organizations. AAUW is listed as a top women's empowerment organization and a top education organization. In their reviews, supporters of AAUW shared AAUW's important role in their lives. These stories, featured on the GreatNonprofits.org website, highlight examples of AAUW's work to advance equity for women and girls through advocacy, education, philanthropy, and research. [www.aauw.org](http://www.aauw.org)*



## GETTING TO KNOW YOU

*A Sincere Welcome to ALL Our New Members*

**Nelda Carlisle-Gray:** 698 Trailcrest Ct. Unit 2, St. Louis, 63122 Phone: 314-821-7117 Cell: 314-469-7063  
E-Mail: [neldacg@mac.com](mailto:neldacg@mac.com)

Nelda received an AA from City College of San Francisco, a B.S. degreed from National Louis U., and an M.Ed from UMSL. Now retired, Nelda previously worked as a manager at AT&T and as a case manager at both St. Anthony's Health Center and at Hyland Health. Her interests include card-making, reading, playing duplicate bridge, and mentoring. Nelda is also an active volunteer at Kirkwood United Methodist Church, at Epworth Family Services and at Shalom House. We are happy to have Nelda, previously a member of the Kirkwood Branch, now in our branch.

**Susan Fenwick:** 2303 Longest Drive, Wentzville, 63385  
Phone: 636-698-4849 E-Mail: [susan\\_fenwick@yahoo.com](mailto:susan_fenwick@yahoo.com)

Susan received a B.A. in Computer Science from Coe College in Cedar Rapids, IA. From the U. of Iowa she received a B.A. in Spanish; a Master's in Spanish, and a Ph.D in Spanish Linguistics. Prior to her retirement Susan worked as a Spanish Technical Translator and as a Software Engineer. Susan presently volunteers in the research department of the Missouri Botanical Garden. Her hobbies include making greeting cards, reading, and photography. Susan, we extend a warm welcome to you.

**Gay D. Meakim:** 819 Phaeton Dr., Manchester, 63021  
Phone: 636-527-6434 Cell: 808-363-3428  
E-mail: [meajt@aol.com](mailto:meajt@aol.com)

Gay has a B.A. in Communications and Journalism from the U. of St. Thomas in Houston, TX. She is a recent retiree from Wells Fargo Advisors where she was an Assistant Vice-President. Prior to her recent move to our area Gay belonged to AAUW branches in Houston, TX and Richmond, VA. She has an interest in reading and in current events and she is looking forward to becoming an active and involved member of our branch. Gay, we are delighted to have you with us.

**Sue Smith:** 8116 Halifax Dr. St. Louis, 63105  
Phone: 314-721-0398 E-mail: [paintspix@sbcglobal.net](mailto:paintspix@sbcglobal.net)

Sue has a BA from Maryville U., an M. Ed from UMSL, and a MA from Webster U. Her specialization is in social work and counseling. She was the owner of Self-New Freedom Counselors. She is an active member of Emmanuel Episcopal -Webster Groves and in Cold Streets grief group. Sue is interested in ancient icons and she enjoys painting, swimming, and reading. We are pleased she has joined our branch.

**PLEASE NOTE:** To those reading your newsletter online—all links are "live", although they are black. Just rest your mouse on the site name, hold the "control" key down, and click your mouse to go to the sites.

Strutt'n Our Stuff"

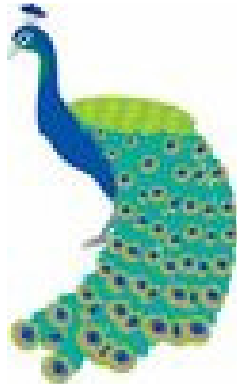
**SPRING LUNCHEON AND INSTALLATION OF OFFICERS**

**WHITMOOR COUNTRY CLUB**

**THURSDAY, MAY 12, 2011**

**11:15 AM**

**Join in celebrating the achievements of our branch – help us “strut our stuff.”**



**You may make reservations for our Spring Luncheon at the March and April branch meetings (Cost \$24).**

**You may also send your check, made out to AAUW Ballwin-Chesterfield to Jane Miller, 10 Woods Hill Dr., Chesterfield, MO 63017.**

**Registration and advance payment must be received by April 29<sup>th</sup>. After that date payments are nonrefundable.**

**No tickets will be issued. Seating will be based upon your table selection at time of reservation. Guests are welcome. To ensure seating with guests or friends, select your table and register all attendees simultaneously.**

**No valet parking is available; but the parking lot is flat. Directions will appear in the April Newsletter.**

**Questions? Contact Jane Miller 314-434-8173 or miller.jane@sbcglobal.net.**

AAUW St. Louis Interbranch Council 2011 Annual Event:

**IBC Spring Fling**

**Saturday, March 19, 2011**

**Norwood Country Club, #1 Norwood Hills Country Club Dr**

**(I-70 and Lucas Hunt Rd, one mile north on west side of the street--Near UMSL in North County)**

**314-521-0682**

Program:

"Clara Barton" aka Barbara Kay

Clara Barton was born December 25, 1821 and died on April 12, 1912. She was the founder of the American Red Cross in 1881, the same year American

Association of University Women was organized. Come and learn what life was like in 1881 for this courageous woman as portrayed by Barbara Kay.

11:00 am Set Up Tables and Silent Auction Items

11:30 am Registration, Silent Auction Bidding, Social Time, Cash bar

2:15 pm Welcome and Lunch

MENU: Grilled Chicken Forestiere with Steamed Mushrooms, Caesar Salad, Roasted New Potatoes, Vegetable Medley, 130<sup>th</sup> Birthday Cake and Ice Cream, Coffee, Tea, Rolls  
Note: Vegetarian entrees available. Require week's prior notification

Mail the registration form below, **by March 8**, with your check (payable to AAUW Metro St. Louis IBC) to: Carol Davis McDonald, 827 Bergquist Drive, Manchester, MO 63011-4215. Questions? Davis-mcdonald@juno.com or 636-227-0511.

**IBC Spring Fling 2011 Registration Form - please print**

NAME \_\_\_\_\_

BRANCH \_\_\_\_\_

ADDRESS \_\_\_\_\_  
\_\_\_\_\_

E-Mail \_\_\_\_\_

Phone \_\_\_\_\_

Check enclosed for: \_\_\_\_\_ person(s) x \$25.00.

(Describe dietary needs, if any, and attach to this form.)

Please include any additional names or guests, including branch, with this form.)

# AAUW, IBC & Branch News (Continued)

**NOTICE TO BALLWIN-CHESTERFIELD MEMBERS:** At the March branch meeting, members will vote on the following changes to the branch Bylaws and Policies: (Page numbers refer to pages in your branch directory. Proposed changes are in italics.) - *Doris Nistler*, Chair

## Proposed Motions from Bylaws Committee Meeting December 10, 2010

### 1. Motion regarding change in quorum

Bylaws of AAUW, Ballwin-Chesterfield, Missouri Branch

ARTICLE XIII. MEETINGS, Section 4 shall read: (p. 89)

Section 4. "Quorum": *Fifteen (15) percent of the members of the branch shall constitute a quorum.*

### 2. Motion regarding branch fundraising policy.

Policies of AAUW Ballwin-Chesterfield, Missouri Branch

ARTICLE VI. FINANCIAL ADMINISTRATION (p. 93)

Section 7. "Finances" (following existing paragraph):

*Funds raised by the branch shall be limited to those undertaken in support of the Ballwin-*

*Chesterfield annual budget, AAUW Funds, and the branch local scholarship program. Funds will not be used for charitable organizations other than the AAUW.*

*Any branch fundraising program or project must be approved by the board.*

*The board may approve branch charitable projects that include the giving of goods and services.*

### 3. Motion requiring bylaws committee to obtain board approval.

ARTICLE XIV. COMMITTEES, Section 1, f. shall read: (p. 96)

f. Bylaws Committee shall review the branch bylaws and policies and make recommendations as needed *to the board.*

## INTER BRANCH COUNCIL NEWS

Please come to the **Spring Fling luncheon** Saturday, March 19 at Norwood Country Club – registration deadline is March 8; a flyer appeared in your February newsletter, or see p. 5 for an abbreviated form. Be sure to sign up and join the celebration of 130 years of AAUW. Listen to Clara Barton talk about her life in the 1800's. Share in the Barbara Lackritz Service Award recognition of this year's winner, Betty Takahashi from St. Charles Branch, and prior winners as well.

The **next IBC meeting** is Tuesday night, March. Let Leslie Wier know if you have any items that need to go on the agenda.

The St. Charles Branch is holding a **Ladies Tea Time Trivia** Event to raise funds for their Local Scholarship Fund on Saturday, April 9 from 1 – 3:30 PM at the Fellowship Hall, Faith United Methodist Church, 2950 Droste, St. Charles. Go to the IBC web page, [aauwstlouisibc.com](http://aauwstlouisibc.com), to download a flyer, or contact Joyce Katz.

- *Leslie Wier*, IBC Liaison

## SHOP AND DONATE TO AAUW AT THE SAME TIME! – 2 ways:

### 1. USE A SCHNUCKS e-SCRIP COMMUNITY CARD

Ask for an "e-Scrip" card when you go to your local Schnucks store or call Susan Haynes (314-839-8662) for a pre-registered card.

### 2. SHOPPING AT OFFICE DEPOT BRINGS CASH TO THE BRANCH

Every member purchase at Office Depot credits the branch with cash that is used to publish your newsletter! Just tell the store clerk: "**AAUW Worklife Rewards #123 104 8594**" (ID: Katz, 314-878-4521).

For a new 2011 wallet-sized information card pick one up at a branch meeting or contact Joyce Katz (314-878-4521).

## Celebrating Women: Reinventing Ourselves After 50

AAUW will have a special table at this event! Holly Burgess, AAUW-MO Public Policy Chair, assisted by Sandy Camillo of Ballwin-Chesterfield, is making this arrangement. Please come out, and bring a friend!

**This is a FREE event thanks to a generous gift from Zonta Club of St. Louis. Saturday, March 26, 2011 8:30 a.m.–4:00 p.m. J.C. Penney Conference Center, University of Missouri–St. Louis**

The workshop features more than 20 exciting activities and exhibits focused on topics of particular interest to women over the age of 50. The day will offer information and ideas on topics from health issues to resources in the community to craft and hobby ideas – all to help make life less stressful and more enjoyable as we cross the line into that "magical" age.

**Register today by calling Raina at (314) 516-5974** or clicking the link below, and celebrate yourself! (Map to UMSL and UMSL Map: Bldg. 2 on North Campus Map; park in Lot C) Registration to attend the event is not required, but encouraged. **A salad buffet lunch is available for \$5, but must be paid in advance while registering.**

**Participants May Register Online!**

# UPDATES FROM OUR BRANCH CHAIRS

## EOF: UPDATE ON OUR SILVER ANNIVERSARY GRANT

It all began in 1888, when the founders of AAUW awarded the organization's first fellowship of \$350 to a female scholar. Since then, the AAUW Educational Opportunities Fund has gone on to become a leading supporter of graduate women, women wanting to return to the work force, and women seeking degrees in non-traditional careers.

In May 2005, the national AAUW Educational Foundation Board approved the start of the Ballwin-Chesterfield Branch Silver Anniversary Grant. This grant will have ten years from its establishment date to reach the completion level of \$75,000. At that time, or before if fully funded, the revenue created will be used as the National office directs to fund a research or project award.

As of December 31, 2010, after five years of giving, approximately \$68,000 has been contributed to the grant. Of this amount, the branch has contributed nearly \$30,000. This is money that is earned from the "Dollars for Scholars" program. The remaining funds have come from individual contributions. BRAVO!! This is just one of many ways AAUW Ballwin-Chesterfield is helping women achieve a lifetime of success. -- *Mary Kay Wolfe & Jan Horner, Chairs*

## Legal Advocacy Fund (LAF)

### \$23,000 AWARDED TO AAUW TO SUPPORT THEIR FIGHT AGAINST GENDER DISCRIMINATION

5,600 women filed a class action lawsuit against Novartis, a pharmaceutical corporation. "These women faced what has become typical discrimination concerning the three P's: pay, promotion, and pregnancy." In May, 2010 the court found for the women and the settlement was approved in December, 2010. The settlement provides for \$22.5 million worth of changes to company policies and procedures, and more than 6,000 current and former Novartis employees will receive up to \$152.5 million in payments for back pay and compensatory damages.

As part of the settlement the company will be paying a "cy pres award" of \$23,000 to AAUW for their work to advance equity for women and girls. This type of award is usually included in settlements that promote social change.

### START SMART WORKSHOP SCHEDULED FOR SEPTEMBER 19-21, 2011

Start Smart is an AAUW National initiative and is being administered in the St. Louis area by the InterBranch Council. (To learn more, see the article in your February newsletter.)

The good news this month is that we have definite dates for a Start Smart salary negotiation workshop and a facilitator training session in the St. Louis Area. The purpose of the three hour workshop is to give women students the tools to negotiate fair salaries and benefits as they prepare to enter the job market. The facilitator workshop will train facilitators to expand the program.

## FEBRUARY INDIVIDUAL GIVING EVENT

Our thanks and sincere appreciation goes out to those members who participated in the LAF Individual Giving at the February Branch Meeting. Your generous support raised \$1,741.00. Your gift will help fulfill AAUW's mission to advance equity for all women and girls.

If you were unable to attend the meeting and would like to support AAUW-LAF's Value Promise you may send your tax-deductible donation to Barbara Butchart, 107 Shaelah Ct., Weldon Spring, MO 63304. Please make checks payable to AAUW Funds- LAF on the memo line.

- *Barbara Butchart- Ruth Griffin* co-chairs

## PUBLIC POLICY -- AAUW Wants You To Be An Activist!

AAUW conducted a Webinar on Wednesday January 20, 2011 to promote and aid in advocacy activities by individual members. They encourage all members to arrange in-district visits to their representative's offices to present AAUW's position on issues that will be voted on by Congress.

AAUW has outlined guidelines that should be followed to ensure an effective presentation. These guidelines, the "6 P's", are:

1. **Patience**-Don't give up if you get turned down for an appointment
2. **Persistence**-Keep long-range goals in view; continue to work toward those goals no matter how many setbacks occur.
3. **Proactive** – Don't wait until the night before the vote to speak to your representative.
4. **Prepare**- Know exactly what you're going to say/plan a script/rehearse
5. **Passion** for your contact-Don't pick a representative who you can't see eye to eye with.
6. **Personal story** – They will remember your story even if they forget you.

You can play a pivotal role in determining what laws Congress passes. Let your voice be heard. – *Sandy Camillo, Chair*

### WOMEN'S LOBBY DAY-JEFFERSON CITY—STATECAPITOL

**TUESDAY, MARCH 29, 2011, 8:30 AM COST: \$10.00**

Here's a wonderful opportunity to practice your activism skills when you visit with Legislators on Women's Lobby Day. **Go to [aauwballwin-chesterfield.org](http://aauwballwin-chesterfield.org) to download a flyer/registration form, or contact Joyce Katz to have one mailed to you.**

**Please make your reservations before March 26, 2011. Complete the form below and mail to Missouri Women's Lobby Day, 138 Kings Drive, St. Louis County, MO 63034 or fax to 314-831-3288.**

**For late reservations or more information, call 314-831-5359 or 573-642-6354.**

- *Sandy Camillo, Chair*



# DOLLAR\$ FOR \$SCHOLAR\$

*The proceeds from Dollars for Scholars activities go entirely to the Educational Opportunities Fund (formerly Educational Foundation) and to our local scholarships. Our goals are to raise money for scholarships, to give members opportunities to work together in small groups or provide enriching and educational experiences, and to introduce AAUW to non-members. If you have an idea for an activity, please contact Judy Green (314-878-4897) or Barb Tackitt (636-343-0657, [harvibarb@charter.net](mailto:harvibarb@charter.net)).*

**MAKE ALL DOLLARS FOR SCHOLARS CHECKS PAYABLE TO AAUW BALLWIN-CHESTERFIELD**

**PLEASE REMEMBER - TAKE PICTURES AT YOUR EVENT!**

## **“A TRIP TO THE ORIENT” - CRAFT EVENT**

Friday, March 4, 6:00 - 10:00 PM AND Saturday, March 5 – 9 AM to 9 PM at Holy Cross Lutheran Church, 13014 Olive Blvd., 63141

**COST: \$35** Entire fee goes to Dollars For Scholars

Bring your crafty projects (scrapbooking, card-making, knitting, crocheting, etc.) and supplies to work on your creative ideas. Invite friends who like to scrapbook, make cards, etc. Work on Fri. night and return Sat. for a day of creative projects. Make 'N Takes: vendors will share craft projects - free or minimal supply cost.

Goody Bag includes paper, embellishments, and surprises. Attendance Prizes for all! Refreshments throughout the event. Please bring your own lunch or lunch at a nearby fast-food place.

Send your check to Jayne Kasten, 11443 Daykin Dr., St. Louis 63146. Questions? Contact Jayne (314-991-5334, [kastenc@sbcglobal.net](mailto:kastenc@sbcglobal.net)).

**DIRECTIONS:** Holy Cross Lutheran Church is on Olive Blvd. between Fee Fee Rd. and Creve Coeur Mill Rd. in Creve Coeur. Turn at light on Fernview. Immediately turn right into church parking lot.

**TOUR SCHLAFLY BREWERY-- Friday, March 11 12:00 Noon - 7260 Southwest Ave, Maplewood, 63143 (Carpool from Trinity 11:15 AM)**

**Cost: \$10.00**

Remember beer the way it used to be? See how this boutique bottler handcrafts each batch of Schlafly Beer. The tour begins in the museum exhibit dedicated to the rich brewing history of StL. Then you will walk through the brewery and view each step of the brewing process, beginning with the finest ingredients and ending in the fermentation cellar. Conclude with complimentary samples of fresh, cold Schlafly Beer. Optional lunch immediately following (cost not included).

**NOTE: Due to safety concerns, individuals wearing open-toed shoes will not be able to enter the brewery proper.** Sign up at the March branch meeting or call Jane Miller (314-434-8173, [miller.jane@sbcglobal.net](mailto:miller.jane@sbcglobal.net)).

**DIRECTIONS:** From 141 and Rt. 64/40 take 64 East. Take the exit toward S. Big Bend Blvd. Turn right at S. Big Bend. Turn left at Manchester. Take the 3rd right onto Southwest Ave.

## **2011 HIGH TEA AND PREVIEW PARTY**

**JOIN US FOR TEA WITH “WOMEN OF HISTORY” Friday, April 15, 2011 - Noon until 2 PM 728 Stonebluff Ct., 63005 (Jeanne Miller's home, 636-537-5384) COST: \$30.00**

Come indulge in a delicious Tea lunch with Georgia O'Keefe, Sally Ride, Julia Childs, Betsy Ross, Sylvia Earle-PhD, Margaret Ursula Mee, Ada Lovelace, or Lucille Ball while supporting Dollars for Scholars and being delighted by the gorgeous table decorations that creative fellow members have designed.

Sign up for the “famous woman” table of your choice at the March branch meeting. If you cannot attend the Branch meeting, mail your check to Jayne Kasten, 11443 Daykin Drive, St. Louis, MO 63146.

**DIRECTIONS:** From Clarkson and Baxter, travel west on Baxter for 0.7 miles; look for white stone pillars and turn right into the Knolls of Stone Hill (a gated community). The gates will be open, Immediately turn left to #728, (the sixth mailbox on the right).

**PLEASE CARPOOL SINCE PARKING IS LIMITED.**

**HIGH TEA PREVIEW – Thursday, April 14 – 6:30 to 8 PM COST: \$15.00**

If you cannot attend the High Tea because you have plans for April 15<sup>th</sup> OR if the Tea is “SOLD OUT,” plan to attend Preview Night to tour the beautifully decorated tables. Bring your friends to support this worthy Dollars for Scholars project. The evening Preview will feature games and surprises for all who attend. Don't miss it!

Enjoy wine and cheese/crackers while visiting and enjoying the gorgeous creativity that is part of our branch High Tea each year.

If there are cancellations for High Tea, Preview Party goers will have the opportunity to pay the additional \$15.00 and attend the High Tea on the 15<sup>th</sup>.

Sign up at the March meeting or send your reservation check to Rita Hawkins, Preview chair, 706 Auber Dr., Ballwin, MO 63011.

# DOLLARS FOR SCHOLARS (Continued)

**HOW TO DRESS FOR YOUR FIGURE TYPE IN THE ART TRADITION – Mon. April 18, 10:30 AM**  
**518 Westonridge Ct., 63021 (Willeyne Berger's home) COST: \$12.00**

B-C member Johanna Prinz, (BFA Fashion Design) will raise your fashion IQ! Learn about the *Golden Mean* and how it relates to dressing for your special figure type, elements and principles of design and how they relate to your clothing choices, and about dressing yourself and others using the same principles that artists use in their creation of art.

Cost includes a take-home pamphlet. Sign up at the branch meetings or contact Johanna (314-968-8197, [johannadesigns@charter.net](mailto:johannadesigns@charter.net))

**DIRECTIONS:** From the Manchester/Clarkson intersection, go West on Manchester to the 1<sup>st</sup> stop light past Clarkson (Old State Rd). Turn left and go 1.1 mile to Ridge Rd. and take the 3rd left onto Crown Point Estates Dr. Turn immediately right on Crown Point Estates Ct. Follow that to Westonridge Ct. Turn left and follow to the back of the subdivision to # 518.

**COLDWATER CREEK FASHION SHOW, Tuesday, April 19 - 10:00 AM - COLDWATER CREEK AT WEST COUNTY CENTER COST: \$15.00**

Be 'fashion forward' for spring! Enjoy a light breakfast and see the latest fashions modeled by our AAUW members and more! If any member, any size, is willing to model, please let Karen, Judy, or Barb know.

Sign up at the March or April branch meetings or contact Judy Green (314-878-4897), Barbara Tackitt (636-343-0657), or Karen Francis (314-739-4425).

## SPECIAL INTEREST GROUPS

**ABOUT OUR INTEREST GROUPS.....** Interest groups are just that: they are primarily social in nature and bring members who have a similar interest together to enjoy an activity. Some groups, such as bridge, must limit their numbers, but others are open and people come as often as they can. Try one! Contact a sponsor today. Linda Tinker (636-273-5605, [richborough2342@att.net](mailto:richborough2342@att.net)) coordinates all interest groups and can help you with information you need.

### **SATURDAY NIGHT SINGLES – MARCH EVENT**

The group will have a spectacular event in March but details were not determined at press time.

Group members will be notified by email with the March event's particulars. If not on the groups' mailing list, contact Donna Ross (636-532-4572, [victorianwhodunit@att.net](mailto:victorianwhodunit@att.net)) for information.

*This is a group of widows, divorcees, and never-marrieds who come together monthly to enjoy each others' company.*

### **GREAT DECISIONS - (1st Monday & 3rd Thursday - 1:00 PM) March 7 & 17 – 816 Mason Wood Dr., 63141 (Sandy Camillo's home, 314-576-5687)**

Participants read and discuss timely global topics from the Great Decisions briefing book.

*This group is now closed. Participants must have purchased required book by Nov. 2010.*

### **GOLF – 1<sup>st</sup> through 4<sup>th</sup> Mondays - April through October - SIGN UP NOW!**

All skill levels above beginner are welcome! Play for fun: 9 or 18 holes and come as often as you can. Golfers are notified of play dates via phone or e-mail, so to get on the list and in on the fun, please contact Bev Wait ([wait89@aol.com](mailto:wait89@aol.com)) or Elaine Frost (314-432-0899, [elfrost7@charter.net](mailto:elfrost7@charter.net)).

### **MAH JONGG (Mondays, 11:00 AM – 3 PM) March 7, 14, and 28 (No meeting on March 21) - Hometown Buffet, 1282 Old Orchard Center, 63021. Please email Donna Ross at [Victorianwhodunit@att.net](mailto:Victorianwhodunit@att.net) as RSVP is essential!**

All mah jongg players are most welcome to join in! If you have a mah jongg game, please do bring it. Your RSVP allows the hostess to prepare for all players.

**DIRECTIONS:** From Hwy 141 and Manchester go East on Manchester 0.7 miles and turn right at Braeshire Dr. to restaurant on the right.

### **Diversity Statement**

***In principle and practice, AAUW values and seeks a diverse membership. There shall be no barriers to full participation in this organization on the basis of gender, race, creed, age, sexual orientation, national origin, disability, or class.***

# SPECIAL INTEREST GROUPS (Continued)

## BRIDGE GROUPS

Any Ballwin-Chesterfield branch member who is interested in playing bridge as a permanent member or as a substitute in one of the groups may contact Linda Tinker (636-273-5605, [richborough2342@att.net](mailto:richborough2342@att.net)).

### **BASIC BRIDGE AND BEYOND (3<sup>rd</sup> Thursdays, 9:30 AM) Hearth Room**

**Mar. 17:** Call Ann Jaques (314-434-3439)

### **BRIDGE I (1<sup>st</sup> Wednesdays)**

**Mar. 2:** Call Jan Loudon (636-227-6925)

### **BRIDGE II (3<sup>rd</sup> Tuesdays, 11:00 AM) Wildhorse Grill**

**Mar. 15:** Call Diane Correll (636-458-6316)

### **BRIDGE III (4<sup>th</sup> Wednesdays, 10:00 AM) Hearth Room**

**Mar. 23:** Call Terri Steinberg (314-878-8610)

### **BRIDGE IV (1<sup>st</sup> Tuesdays, 9:30 AM)**

Please call the hostess to let her know if you are coming.

**Mar. 1:** Call Susan Sheppard (636-532-7231)

### **BRIDGE V (2<sup>nd</sup> Tuesdays, 9:30 AM)**

Please call the hostess to let her know if you are coming.

**Mar. 8:** Call Carol Berry (314-283-3427)

### **BRIDGE VI (3<sup>rd</sup> Mondays, 10:00 AM) Hearth Room**

**Mar. 21:** Call Brenda Ernst (636-394-5937)

### **DUPLICATE BRIDGE I (2<sup>nd</sup> Wednesdays, 12:30 PM)**

**Mar. 9:** Call Nancy Remley Wilhelm (636-519-0391)

### **DUPLICATE BRIDGE II (4<sup>th</sup> Tuesdays, 9:45 AM) Hearth Room**

**Mar. 22:** Call Nancy Remley Wilhelm (636-519-0391)

## MOVIE GROUP (4<sup>th</sup> Thursday - 10:00 AM)

**Feb. 24th - 840 Crescent Oaks Ct. - Valley Park, 63088 (Mary Erickson's home - 636-225-2370)**

Movies nominated for discussion: *The Way Back*, *Another Year*, *Beautiful*, *The Company Men*, *Barney's Version*, *Unknown*, and *Poetry*

**DIRECTIONS:** Go south on Hwy. 141, right on Helfrich Expwy. (the exit after Big Bend), turn slight right onto Valley School Dr., and left on Crescent Ave. Go three stop signs and then right on Crescent Oaks Ct. House is on the left.

**March 24th** - Discussion at Diane Siegel's home. Movies will be announced in the April newsletter. For more information about this group, contact Mersine Kallaos (314-822-2567 or [mkallaos@prodigy.net](mailto:mkallaos@prodigy.net))

## **"OUT-TO-LUNCH" GROUP - Third Wednesdays**

**March 16, 11:30 AM - Luciano's Trattoria, 172 Carondelet Plaza, Clayton - Car pool from Trinity Lutheran Church at 10:45 AM.**

This month we will visit the Clayton area for a change. All members of Ballwin-Chesterfield are invited.

Sign up at the March branch meeting or call Harriett Hirschfeld (636-458-1520) for reservations.

**DIRECTIONS:** From Trinity, turn left on Clayton Rd and then go north on HWY 141 to east on Interstate 40/64. Exit on Brentwood heading north. Turn right at Bonhomme to left on South Central, then right on Carondelet. Continue until you reach the Carondelet Plaza circle. The restaurant is on the right.

## **EXPRESSIONS (1<sup>st</sup> Tuesdays, 1:00 - 3:00 PM)**

**March 1 - Rockwood Bank, Rt. 109, 63040**

**COMBINATION EVENT - RSVP to Becky Kruse (636-519-9287 or [kruser6556@yahoo.com](mailto:kruser6556@yahoo.com))**

Bring the Penny Mat kit from the snowed-out Feb. meeting to finish, AND try 2 new techniques for making cards.

At least 1 card will be made to send to deployed troops overseas for them to use to send messages back to their loved ones. Then, make cards for your loved ones!!

Card supplies needed: scissors, tape runner (adhesive) and a trimmer.

**DIRECTIONS:** Drive west on Manchester from the Clarkson/Manchester intersection and exit at Rt. 109. Turn left (south) and cross over Manchester, continuing to Rockwood Bank on your left.

## **PLAY READERS (3<sup>rd</sup> Mondays, 12:45 PM)**

**March 21 - 401 Oakmont Circle, 63011 (Julie Triplett's home, 636-256-3078)**

**DIRECTIONS:** From the Baxter-Clayton intersection go West on Clayton Rd 0.5 miles to Country Club Dr. Turn left and go to the 2nd stop sign. Turn left on Kenilworth (it becomes Algonquin). Turn left on Oakmont Circle. #401 is first house on the left.

## **PLAY READERS, TOO! (1<sup>st</sup> Fridays - 1:00 PM)**

**Mar. 4 - 17601 Lasiandra Dr., 63005 (Jill Norton's home, 636-530-0962)**

**DIRECTIONS:** From Hwy. 40 take the Chesterfield Airport Exit and turn on to Long Rd. Turn right at Wildhorse Creek Rd. and go 0.8 mi. Turn left into Wildhorse Subdivision. Stay on Wildhorse Parkway for 1.7 miles and turn left on Lasiandra Dr. Continue to #17601 at the end of the cul-de-sac.

# Special Interest Groups (Continued)

## BOOK GROUPS

Download the 2010-2011 book lists from [aauwballwin-chesterfield.org](http://aauwballwin-chesterfield.org), "Interest Groups" page or contact the individual sponsors. Need help? Call 314-878-4521.

### **LITERATURE I (3<sup>rd</sup> Thursdays – 9:30 AM) Mar. 17 – 232 N. Kingshighway Blvd. #903, 63108 (Linda Stark's home, 314-571-9211)**

A discussion of *The Piano Teacher* by Janice Y.K. Lee will be led by Teri Steinberg.

**DIRECTIONS:** Hwy 40 to 170 North. 170 North to Forest Park Pkwy. Go east to Kingshighway Blvd and turn left. Park on street or turn right at first street, Maryland Ave. (Straub's is across the street), where a parking garage is a short distance up the street. Enter the lobby on Maryland and go to the Concierge Desk to check in.

*This group is closed due to the large number of members. For information, call Alice Crippen (636-227-4284, [jccripp@sbcglobal.net](mailto:jccripp@sbcglobal.net))*

### **LITERATURE II (4<sup>th</sup> Mondays - 10:00 AM) Mar. 28 – 1845 Bookbinder Dr., 63146 (Pam Valentines' home, 314-434-8387). Please RSVP to Pam.**

A discussion of *Sarah's Key* by Tatiana De Rosnay will be led by Helen Fick and Judy Stagoski.

**DIRECTIONS:** From Rt. 141 and Olive St. Rd. turn right (east) on Olive St. Rd. Go 0.7 miles and turn left on Creve Coeur Mill Rd, and go 0.1 miles and turn right on Old Farm Dr., which after 0.3 miles becomes Bookbinder Dr. Go 0.4 miles to 1845 Bookbinder Dr. on the left.

*We welcome all readers! For information, contact Joyce Katz (314-878-4521, [joyka234@aol.com](mailto:joyka234@aol.com)) or Erlaine Eltomi (636-537-2736, [erlaine@charter.net](mailto:erlaine@charter.net)).*

### **READING REALITY (2<sup>nd</sup> Tuesdays – 1:30 PM) Mar. 8 – 816 Mason Wood Dr., 63141 (Sandy Camillo's home, 314-576-5687). PLEASE RSVP TO THE HOSTESS**

A discussion of *Starbucked* by Taylor Clark will be led by Sandy Camillo.

**DIRECTIONS:** From Hwy 40 and Mason Rd. go South on Mason Rd. 0.1 miles and turn right onto Masonridge Rd. Go 0.4 miles and turn right onto Mason Wood Dr. Go 0.2 miles to #816.

### **BIOGRAPHY BOOK CLUB (BBC) (1<sup>st</sup> Monday – 10:00 AM) March 7 – 15049 Claymoor Ct., 63017. (Brenda Ernst's home, 636-394-5937). PLEASE RSVP TO BRENDA.**

March Selection: *Best of Friends: Martha Stewart* by Maryanne Pasternak. Reviewer: Cecelia McFadden .

**DIRECTIONS:** From Trinity Lutheran Church, turn left (west) on Clayton Rd. Drive past Parkway West High School to right on Claymoor Dr. Turn on first street on the left which is Claymoor Ct. From 40/64, go west and exit on Clarkson Rd. heading south to left on Clayton Rd. Continue past Baxter Rd. and turn left on Claymoor Dr. Brenda's building on the last one on the right. Ring buzzer and she will let you in.

*This group reads and discusses biographies, memoirs, and autobiographies of men or women, dead or alive and is open to all members. Call Yvonne Morrison (636-391-6026) or Harriett Hirschfeld (636-458-1520) for more information.*

### **POETRY GROUP (3<sup>rd</sup> Wednesdays - 9:30 AM) – March 16 – 816 Mason Wood Dr. 63141 (Sandy Camillo's home, 314-576-5687). Please RSVP to Sandy.**

Join us for an inspiring poetry discussion!

**DIRECTIONS:** See Reading Reality above.

*All you need to join this group is a love of poetry and the desire to have a good time with friends. Contact Sandy Camillo (314-576-5687, [sandycamillo@gmail.com](mailto:sandycamillo@gmail.com)) for more information.*

## **\*Value Promise**

***By joining AAUW, you belong to a community that breaks through educational and economic barriers so that all women have a fair chance.***

### **CONTACT AAUW**

AAUW HELPLINE: 800-326-AAUW (2289)

(10:00 AM to 5:00 PM EST)

Tel: 202-785-7700 (8:30 AM 5:00 PM EST)

Fax: 202-872-1425

TDD: 202-785-7777

E-mail: [connect@aauw.org](mailto:connect@aauw.org) or visit the AAUW Member Center

### **FIND AAUW ON THE INTERNET**

AAUW National website: <http://www.aauw.org>

AAUW-MO website: <http://www.aauwmo.org>

Metropolitan St. Louis Interbranch Council website:

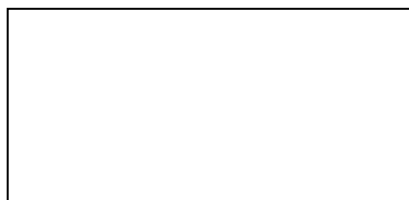
[AAUWStLouisIBC.com](http://AAUWStLouisIBC.com)

Ballwin-Chesterfield Branch website:

<http://www.aauwballwin-chesterfield.org>

Search AAUW on [Facebook.com](#)

Mary Jermak  
 15231 Brightfield Manor Dr.  
 Chesterfield, MO 63017



## MARCH, 2011

SUN	MON	TUES	WED	THURS	FRI	SAT
		1 9:30 AM <u>BRIDGE IV</u> 1:00 PM <u>EXPRESSIONS</u>	2 <u>BRIDGE I</u>	3 9:30 AM <u>BOARD MEETING</u>	4 1:00 PM <u>PLAY READERS, TOO!</u> 6:00 PM A TRIP TO THE ORIENT →	5 9AM – 9 PM A TRIP TO THE ORIENT
6	7 10:00 AM <u>BBC</u> 11:00 AM <u>MAH JONGG</u> 1:00 PM GREAT DECISIONS	8 9:30 AM <u>BRIDGE V</u> 10:45 AM INTERNATIONAL <u>RELATIONS</u> 1:30 PM READING REALITY	9 12:30 PM DUPLICATE <u>BRIDGE I</u>	10 8:45 AM <u>BRANCH MEETING</u>  NOMINATIONS FOR NAMED GIFT AWARDS DUE	11 12 NOON <u>SCHAFLY</u> <u>BREWERY</u> <u>TOUR</u>	12
13	14 11:00 AM <u>MAH JONGG</u>	15 11:00 AM <u>BRIDGE II</u>  11:45 AM DOWNTOWN LUNCH	16 9:30 AM <u>POETRY</u> 11:30 AM OUT-TO-LUNCH	17 9:30 AM <u>BASIC BRIDGE</u> 9:30 AM <u>LITERATURE I</u> 1:00 PM <u>GREAT DECISIONS</u>	18	19 11:00 AM IBC SPRING FLING
20	21 10:00 AM <u>BRIDGE VI</u> 12:45 PM <u>PLAY READERS</u>	22 9:45 AM DUPLICATE <u>BRIDGE II</u>	23 10:00 AM <u>BRIDGE III</u>	24 10:00 AM <u>MOVIE GROUP</u>  1:30 PM ADELANTE	25	26
27	28 10:00 AM <u>LITERATURE II</u> 11:00 AM <u>MAH JONGG</u>	29 8:30 AM WOMEN'S LOBBY DAY	30	31		

Color Key: AAUW & IBC EVENTS, BRANCH EVENTS, DOLLARS FOR SCHOLARS EVENTS, INTEREST GROUPS