

Branching Out

AAUW Ballwin-Chesterfield
National and State Award-Winning Branch

September, 2015

Vol. 36 No. 2 35th Anniversary Year

FALL BRUNCH

**SEPTEMBER BRANCH
MEETING**

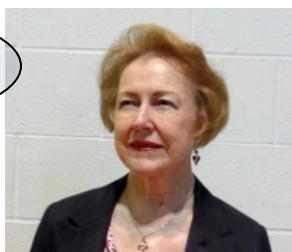
Thursday, September 10

Trinity Lutheran Church
14088 Clayton Road at
Woods Mill Rd.



**PRESIDENTS'
CORNER**

Karen Francis



Barbara McQuitty



Welcome back to another exciting year for Ballwin-Chesterfield! First, thanks for rejoining such a dynamic branch and supporting the mission of AAUW. Four members attended the AAUW Convention in San Diego, with over 1000 attendees, and we are energized to share what we learned! Ballwin-Chesterfield was one of 21 branches asked to present programming ideas. We shared *Prison Reform and Clemency as It Relates to Women*. Suzanne Couch did an excellent job showcasing our branch! Our branch was honored as 13th in the nation for donations to AAUW Funds. The next AAUW Convention is in Washington, D.C., June, 2017. I encourage you to start saving and plan on attending.

I hope you've made a reservation for our brunch, "Tell it Like It Is" — there's still time. It will be a bit different, with the food being served around 10:45 a.m. Arrive at the regular branch meeting time and hear from your board. You'll have an opportunity to "tell us, like it is" regarding B-C and what you'd like to see us doing! Be thinking about what a Dollars for Scholars event you'd like to sponsor; remember, Dollar\$ is our activity that supports local scholarships! This year we are sponsoring five young women: four at UMSL and one at Maryville. In case you missed it (ICYMI), Maryville is now a College University (CU) partner. We will work with them throughout the year.

I also want to encourage you to check out the activities sponsored by our Interbranch Council (IBC), which includes the ¡Adelante! book club and Downtown Lunch group. You will have an opportunity to meet women from the other five metro branches. The information is always in our *Branching Out*.

On a personal note, I again want to thank you as my AAUW sisters for your support and offers to help my family following my home fire. We talk about how close we are, but during tragedies and time of need, B-C is always there!

From the bottom of my heart, THANK-YOU!

Have an empowering day!!

~ **Karen Francis**

BOARD MEETING:

The next meeting is September 3, 9:30 a.m. at Trinity Lutheran Church. All Elected and Appointed Directors should attend. Contact Karen Francis, karenbitzafrancis@yahoo.com

The AAUW Ballwin-Chesterfield branch begins another great year as it welcomes members and prospective members at its Fall Brunch.

"Tell It Like It Is"

Social time ~ 8:45–9:30 a.m.
with coffee, tea, orange juice

Regular meeting ~ 9:30 a.m.
Brunch will be served at 10:45 a.m.

Menu
chicken salad, fruit cup,
& turtle brownie

This year's brunch will need a count of members and guests. For reservations, contact Nancy Hutchins (bodaciouspsychobabe@yahoo.com) or call her number listed in the Directory by Monday, August 24. Nancy is happy to receive your reservation by phone or by email.

Please let Nancy know if you have any special dietary needs.

~ **Kay Meyer & Joanne Nelson, Fall Brunch**

INSIDE

- P. 2 Officers, AAUW MO Fellowships & Grants, Directory, ¡Adelante!, & Downtown Lunch
- P. 3 ER Walk, Trivia, Auction, & Membership
- P. 4 Public Policy, LAF, & Communications/Web,
- P. 5 EOF, Hospitality, DFS Event, & *Did You Know*
- P. 6-7 Dollars for Scholars
- P. 7-9 Interest Groups
- P. 9 SEPTEMBER Calendar

For Membership Information, Contact
Marilyn Fletcher (marilynletcher597@gmail.com) or
Linda Seibert (lindajbseibert63@gmail.com).

Branching Out is published monthly except June and August. Submit articles to newsletter editors. Article submission deadline for October is September 10.

For Care Notes, contact Joan Reed (j6a8r1@aol.com).

Visit aauwballwin-chesterfield.org for
Flyers & Forms referenced in this newsletter.
Contact Communications/Web Chair Joyce Katz,
joyka234@aol.com, for tech assistance.

AAUW BALLWIN-CHESTERFIELD BOARD

ELECTED OFFICERS

Presidents: Karen Francis & Barbara McQuitty
V-P Program: Jan Horner & Judy Stagoski
V-P Membership: Marilyn Fletcher & Linda Seibert
Secretary/Archivist: Susan Fenwick
Finance Officer: Rita Hawkins-Page
Ex-Officio Immediate Past President: Suzanne Couch

ELECTED DIRECTORS

Educational Opportunities Fund:
Marian Bauer & Linda Roberson
Legal Advocacy Fund: Linda Evans & Julie Triplett
Public Policy: Barbara Butchart & Pat Shores

APPOINTED DIRECTORS

Communications/Web: Joyce Katz
Directory: Marilyn Beiter & Leslie Wier
Dollars for Scholars: Barbara Jowett & Barb Tackitt
Governance: Doris Nistler
Hospitality: Vicky Jany & Darlene Harris
Branch Development for Leadership/Operating Funds:
Erlaine Eltomi, Jayne Kasten, & Joyce Katz
Newsletter Editors: Bette Bude & Mary Jermak
Special Events:
Fall Brunch - Kay Meyer & Joanne Nelson
Spring Luncheon - Carol Derington
STEM: Marcia Block & Sandra Murdock

Standing committee chairs are listed in the *Directory*.

2015-16 Recipients Of Completed AAUW Missouri Fellowships and Grants

A special thanks to AAUW Missouri branch members who worked very hard over the years to fund Missouri endowments. Each year these completed fellowships and grants sponsor worthy recipients to carry out our work of making the world a better place for women and girls. Some of the grants this year are sponsoring Missouri people.

- *STEM Girls!* is giving an opportunity to prepare Sedalia young women to take their place in STEM career fields.
- *Breaking the Chains of Human Trafficking* is helping to teach St. Charles County residents what constitutes human trafficking, how to identify victims, and a way to take action against this criminal activity.
- Washington University in St. Louis is receiving funds for a fellow.
- The University of Missouri in Columbia is receiving funds for a grantee.

A complete list of the 2015-16 recipients of completed AAUW MO Fellowships & Grants, and information about their projects, has been posted on the AAUW MO website and on the Home page of each branch website. We can feel very proud of how the Fellowships and Grants we completed are supporting our AAUW Mission in Missouri.

If you have any questions just contact me,
(ydmorrison@msn.com).

~ Yvonne Morrison, AAUW MO Fund Officer

DIRECTORY

Congratulations! Thank you to our 230 members who paid their dues in time to be included in the new *Directory*, a new record for timely payment! Anyone who has not yet paid dues for this new year can still send your payments online to AAUW or via mail to Rita Hawkins-Page (check payable to AAUW). You will then be included in the late fall supplement to the *Directory*.

The new *Directory* will be available for the Fall Brunch; please pick yours up or indicate that you wish an electronic copy instead (or in addition).

We are looking for a new committee member interested in helping us keep the *Directory* going. Thanks for your cooperation and thank you to the advertisers who help stretch our budget.

~ Marilyn Beiter & Leslie Wier, Directory

¡Adelante! IBC Book-of-the Month Club 4th Thursday, 1:30 p.m.

Barnes and Noble, 1600 Clarkson Rd., Chesterfield
September 24:
*Redefining Realness: My Path to Womanhood, Identity,
Love & So Much More* by Janet Mock,
Reviewer-Betty Takahashi

Questions: Julie Triplett (julietrip@att.net)

AAUW IBC DOWNTOWN LUNCH

3rd Tuesday, 11:45 a.m.

September 15: Everest Café and Bar, 4145 Manchester Ave.,
St. Louis, MO (The Grove) 314-531-4800

RSVP to Kay Meyer (kicmeyer51@gmail.com).

2015 ELEANOR ROOSEVELT WALK

Tuesday, October 13, 10:30 a.m.

Des Peres City Park, 12325 Manchester Road, 63131

Here's your chance to help raise funds for research on topics important to AAUW's goals and mission. Sign up for the ER walk; enlist a friend; or sponsor a walker if you can't do the walk.

Sign-up and registration sheets with complete directions will be available at the Fall Brunch in September. A \$25 tax deductible registration is required, but consider an additional gift of \$75 to earn the Eleanor Roosevelt pin and membership in the Missouri Century Club. All contributions made by sponsoring a walker or donations made at any time to the ER Fund are tax deductible.

You may also download a form from the branch website, under Flyers and Forms. Registration sheets, sponsor forms, and checks (payable to AAUW with ER Walk on the memo line) may be turned in at the September or October meetings or on the day of the walk. Contact Jean Elliott (elliotts01@sbcglobal.net) for more information.

~ Jean Elliott, Eleanor Roosevelt Walk

LAF TRIVIA NIGHT

Saturday, October 24, 2015, Trinity Lutheran Church

Reserve the date for a night of fun and games at our LAF Trivia Night fund raiser. Cost is \$160 for an eight-player table, or \$20 per single ticket reservation (\$10 tax deductible). There are games and prizes for 1st and 2nd place tables and complimentary Fitz's Root Beer floats! Beer and wine are permitted on the premises, but no hard liquor. Doors open at 6:15 p.m.; trivia starts at 7 p.m.

Can't make it? Sponsors are needed, so you can still be a part of this event. Being a sponsor of our Trivia Night is a way for you to help support the AAUW mission to advance equity for all women and girls by sharing our fundraising efforts for the Legal Advocacy Fund. Your \$25 (or more) donation as a sponsor is totally tax deductible. Acknowledgement of your support will be published and announced at Trivia Night.

Trivia flyers with reservation information will be available at our branch meetings and activities and soon will be available on our website.

For further information contact the following:
Doris Nistler (dnistler14@att.net),
Linda Evans (LindaKayslp@gmail.com), or
Julie Triplett (julietrip@att.net).

2015 WINTER AUCTION

Be an Angel to Your Branch ~ Help Make This Year's Auction a GIGANTIC Success!

WANTED: Winter Auction Committee Volunteers

The Winter Auction supports our Operating and Leadership Development Funds and is the only fund raiser for this purpose.

WANTED: Auction Items to Be Donated

It's time to be an angel as we prepare for our always fabulous Winter Auction. Get together with friends or your interest groups to design clever auction items, such as a themed luncheon or dinner, a basket of specialties, a weekend getaway, or tickets to special events.

We're Looking Forward to Hearing from You About "Angelic" Ideas and Items!

~ Erlaine Eltom, Jayne Kasten, & Joyce Katz, Co-Directors, Branch Development for Leadership/Operating Funds

GETTING TO KNOW YOU

Welcome our new members
to our AAUW community.



Ilene S. Brooks
Chesterfield, MO 63017
Email: Ilenebrooks@hotmail.com

Ilene is a retired SSD teacher who completed her bachelor's and master's degrees at Hunter College in New York City.

Ilene was previously a member of Creve Coeur AAUW. She now enjoys travel, reading, theater, walking, and volunteer work.

Elaine L. Zemelman
Chesterfield, MO 63017
Email: Elainelz@aol.com

Elaine completed her bachelor's degree in American Sign Language at the University of California, Los Angeles. She also attended California State University, Northridge. She has owned her own travel agency and worked as a script reader.

Elaine has now retired and finds time for movies, plays, reading, volunteering, and traveling.

~ Linda Seibert & Marilyn Fletcher, V-P Membership

PUBLIC POLICY

This summer our national members approved the latest AAUW Public Policy Program for 2015–17. At Ballwin-Chesterfield everything we do in the public policy realm comes directly from the national public policy program. This year our main emphasis will be pay equity, sexual assault on campus, and the prevention of human trafficking.

The first check for our two year AAUW Community Action Grant, *Breaking the Chains on Human Trafficking*, was deposited. The St. Charles Outreach Coalition Against Human Trafficking (SCCAT) has been busy planning community programs and moving into the new SCCAT offices.

On Friday, September 11, from 7–9:30 p.m., SCCAT will have a John Denver Tribute Concert and a Root Beer Float fundraiser at 204 North Main Street in O'Fallon. Please come out and support our Community Action Grant efforts through your attendance and free-will donation.

We invite interested members to join our very active Public Policy Committee. FYI: Eleanor Roosevelt leads the poll to be the new face on the \$10 bill.

~ **Pat Shores & Barbara Butchart**, Public Policy Co-Directors

LEGAL ADVOCACY FUND–LAF

Supreme Court Victories

Courts matter. This year's US Supreme Court decisions supported three issues important to AAUW members.

- **Pregnancy Discrimination: *Young v. UPS*.** The court ruled 6-3 in favor of Peggy Young, a pregnant driver for United Postal Service, who requested temporary light duty available to non-pregnant drivers. UPS refused and she was forced to resign. Young filed suit under the *Pregnancy Discrimination Act*, which lower courts threw out. This favorable Supreme Court ruling means that Young is able to present her case to a lower court for a ruling on its merits.
- **Health Care Protection: *King v. Burwell*.** Burwell challenged the *Affordable Care Act* provision of tax credits for low-income people to purchase health care coverage. The challenge argued that the wording of the ACA allows for individual states to determine its own regulations. The court decided to uphold the meaning of this national law.
- **Voting Rights: Several law cases from Alabama.** The court saw several cases of racial gerrymandering and redistricting, which resulted in packing African-American voters into fewer districts to reduce voting influence. Lower courts heard appeals and sided with the state. The Supreme Court reversed the state's decision, sending the plan back to the lower court for a district-to-district review.

These federal rulings offer hope for women to work without discrimination, access necessary health care, and vote with equal influence. These cases illustrate the lengthy and expensive journey to secure rights and protections provided in the laws already passed. The need for advocacy and the means to do so remain. Keep informed and be willing to discuss these issues when appropriate. Continue to support the Legal Advocacy Fund.

~ **Linda Evans & Julie Triplett**, LAF Co-Directors

COMMUNICATIONS/WEB

Register for the MSD–Member Services Database

Are you a new(er) member, or have you recently gone on the web? Take a few minutes to register with AAUW National's Member Services so you can view your contributions, renew your membership, view a branch roster, print a business card, and/or update your contact information. Here is your step-by-step guide:

1. Go to AAUW (www.aauw.org)
2. Scroll down and click on Member Services Database (MSD)
3. Click on Enter the MSD. You'll see a log in screen
4. If you're a first-time registrant, click on Create An Account. You'll give your member number, which is listed in the Directory, and create a special password—write this down & save it!
5. Keep following the prompts to enter the MSD. You'll be glad you did! Contact Joyce for tech support.

~ **Joyce Katz**, Communications/Web Director

EDUCATIONAL OPPORTUNITIES FUND

An AAUW Community Action Grant has been awarded to Ballwin-Chesterfield to fund an educational project on human trafficking entitled *Breaking the Chains of Human Trafficking*. Congratulations to Pat Shores and her committee who will work on this project in St. Charles County. Your contributions to EOF and Dollars for Scholars make this grant possible.

Local scholarships this year will aid five women at UMSL and Maryville complete their undergraduate degrees. These women are non-traditional students, many of whom are working in the STEM fields.

We have so many ways to support these important works. Back by popular demand is our famous bean soup. It will be sold beginning at the Fall Brunch. Look for Panera Cards, opportunities to play Canasta, and the many and varied Dollars for Scholars events presented by our members.

The used book sale has a new look this year. Be sure to read the notice which follows to see how you can help. Working together we can affect many great things for women and girls.

~ Marian Bauer & Linda Roberson, Co-Directors EOF

DONATE YOUR USED BOOKS - WITH A TWIST!

We are again collecting used books - but with a twist this year. Instead of a used book sale in February (the process of collecting and storing 800+ books has become unwieldy), we will be selling your donated books to local used bookstores and donating the funds to Dollars for Scholars.

We still need your books, CD's, & DVD's! You can clean your book shelves and continue to support Dollars for Scholars by donating your books.

Books will be collected at all branch meetings from September - April.

A NOTE FROM HOSPITALITY ~ A LITTLE NOSH

Everyone enjoys the snack time of monthly meetings. Bringing food is an easy way to volunteer and to contribute to the camaraderie of meetings. If this is something that interests you, please contact Vickie or Darlene.



The easiest way to sign up for a particular month is at monthly meetings. Each month will have a Coordinating Hostess to guide the process. Hospitality is provided at the October, November, January, February, March, and April meetings. Hope to see you at the Fall Brunch.

Vickie Jany & Darlene Harris, Hospitality Co-Directors

DID YOU KNOW . . . ?

Yvonne Morrison, our very own AAUW member, has been honored with the "2015 Catholic Women's Awards."

Yvonne received this prestigious honor from Archbishop Robert J. Carlson on August 2. She represented St. Clare of Assisi Parish in Ballwin.

The Catholic Women's Award is opened annually to one woman from each parish in the archdiocese who is nominated by the pastor or the parish council. The theme for the award this year is comforter/nurturer.

Inclement Weather Alert: Check your email beginning at 8:15 a.m. the day of the event for updates or cancellation.



DFS events raise funds for scholarships, give members opportunities to meet in small groups for enriching & educational experiences, and introduce AAUW to non-members.

ALL PROCEEDS FROM DOLLARS FOR SCHOLARS EVENTS SUPPORT WOMEN'S EDUCATION.
Make Dollars for Scholars Checks Payable to AAUW Ballwin-Chesterfield.

TO SPONSOR AN EVENT, contact Barb Jowett (brjowett@yahoo.com) or Barb Tackitt (harvibarb@charter.net).
 Please Remember - Take Pictures At Your Event!

BREAD, BEANS, AND BOOKS

PANERA BREAD CARDS

On sale at September–November branch meetings

COST: \$10

Buy the Panera Bread Co. cards and use them for any purchase at **any** Panera or St. Louis Bread Co. across the nation! You will receive full value for your money and the branch will benefit. These cards make **GREAT LITTLE HOLIDAY GIFTS** and **THEY NEVER EXPIRE!** Questions? Contact Linda Bader (Lbader7311@aol.com).

BEAN SOUP SALE—GOURMET MIX

On sale at fall meetings

COST: \$6

Back again by popular demand, our homemade gourmet mix, featuring 15 kinds of beans, will be for sale at our **fall meetings**. Our mix is easy to use and makes a large pot of delicious soup. Be prepared for cool fall days and frosty winter nights. Questions? Contact Linda Bader (Lbader7311@aol.com).

*DONATE YOUR USED BOOKS – WITH A TWIST!

Bring donations from September–April

Collect your books, CD's, & DVD's and bring them to branch meetings each month, September–April. Members of the EOF committee will be selling your donated books to local used bookstores and donating the funds to Dollars for Scholars. What a great reason to clean your book and media shelves!

Questions? Contact Mary Kay Wolfe (mkwolfe@hotmail.com). Read the complete article on page 5.

STEP BACK IN TIME—VISIT HISTORIC STE. GENEVIEVE

Tuesday, September 29

COST \$18 (\$10 for DFS, \$8 for Bolduc tour)

Carpool from Trinity at 8:45 a.m. *Return to Trinity at 3:15 p.m.

Spend a day in the historic river town of Ste. Genevieve which is the oldest European settlement west of the Mississippi. Gather at the Welcome Center, 66 South Main Street, Sainte Genevieve, MO, to view a 10 minute video about this 18th century French colony. Visit the Bolduc House properties, a National Historic Landmark, which includes the most authentically restored French Colonial house in the nation plus period gardens. Enjoy lunch, on your own, at the vintage Anvil Saloon where you will relish their famous onion rings and homemade desserts. After lunch, tour the ASL Pewter studio and gallery and watch the handcrafted casting and spinning of one of the oldest known alloys. Driving directions will be available. Make checks payable to AAUW Ballwin-Chesterfield by September 21.

Contact Marian Bauer (marianbauer@sbcglobal.net) or Pat Shores (apatriciashores@att.net) for more information.

*Some may spend the night in this Missouri town with a French accent. Let us know if you would like to join us.

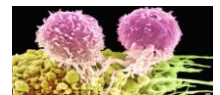


GENOMES: THEY KNOW IT ALL—TOUR

Wednesday, October 14, 10 a.m.

COST: \$10

Carpool from Trinity, 9:30 a.m.



The McDonnell Genome Institute, 4444 Forest Park Ave., 63108—at the corner of Forest Park & Newstead

Curious about Cancer Genomics, Human and Mammalian Genetics, Pathogen/Parasite Genomics, Global Health, OR whether cats really are still wild animals? Learn all about the exciting field of genomics on this presentation/tour conducted by the Outreach Department of the McDonnell Genome Institute.

Optional lunch at a Central West End restaurant being arranged.

Sign up at the September or October branch meeting or contact Bette Bude (dabbl@sbcglobal.net) or Marcia Block (mhblock@sbcglobal.net).

This event is limited to 24 attendees.

PURE PLEASURE PLUS ~ Herbaria and Chocolate!

Thursday, October 29, 10:30 a.m.

Carpool from Trinity, 9:45 a.m.

COST: \$10

Stimulate your senses with a tour of Herbaria and the Chocolate Chocolate Chocolate Company Factory. First, enjoy the splendid aromas like lavender, frankincense, and myrrh as you see how Herbaria's truly natural soap is made. Next, visit the Chocolate Chocolate Chocolate Company Factory to see, hear, smell, and taste chocolates made right in front of your eyes. In between tours, stop for a cup of coffee at Shaw's Coffee, or shop at the various bakeries or stores in this Hill neighborhood.

Lunch: Zia's, 12:30 p.m. (cost not included)

Sign up at the September or October branch meeting or contact Barb Jowett (brjowett@yahoo.com) or Barb Tackitt (harvibarb@charter.net).

BRIDGE FOR SCHOLARS

Mary La Ruffa's Home

Tuesday, November 17, 12:30 pm.



COST \$10

LIMIT 24

Enjoy a fun-filled afternoon of dessert and Bridge at Mary LaRuffa's home. Dessert will be served from 12:30–1 p.m., and then we will play Bridge until 4 p.m. Please remember, if for some reason you cannot attend after signing up to come, send a sub in your place since we need full tables. Sign up early. Space is limited to 24.

Contact Barb Jowett (brjowett@yahoo.com) or Barb Tackitt (harvibarb@charter.net) or sign up at the September, October, or November branch meeting. Directions are available at sign-up or from the Dollars sponsors listed above.

COMMUNITY PROGRAMS BRING \$\$ TO SUPPORT BRANCH WORK

When anyone purchases items at Office Depot and shows our branch card, we receive a cash credit through the Worklife Rewards program. Every time you or a family member shops at Schnucks (including pharmacy), we also get cash credit. Already a participant? Please remember the branch when you shop! Not yet a participant? Visit the MEMBERS ONLY section on the branch website to get started. Questions: contact Mary Jermak, Bette Bude, or Joyce Katz!

Interest Groups

OUR INTEREST GROUPS are primarily social and bring members with similar interests together. Try one! Contact an Interest Group chair today. Interest Groups and their chairs are listed in the front of your *Directory*. Marilyn Fletcher (marilynletcher597@gmail.com) coordinates all Interest Groups and can help with the information you need.

GOLF Mondays

All skill levels above beginner are welcome! Play for fun—9 or 18 holes—and come as often as you can.

If you are interested in playing golf, contact Bev Wait (wait89@aol.com) or Elaine Frost (elfrost7@charter.net).

GENEALOGY 10 a.m.—noon

September 14: Hostess, Pat White (pgwhite02@gmail.com)

The mission of the AAUW genealogical group is to encourage and assist each other with the exploration of our families through genealogy. We welcome anyone, novice to experienced, who wishes to explore her family.

For our first meeting of the branch year, bring a small item that you inherited from a family member and tell its story. Discussion will follow on how to research and evaluate family treasures. Please RSVP to Fran Reiland (fgreiland@sbcglobal.net) or (fgreiland@me.com) for further information.

MOVIE GROUP 4th Thursday, 10 a.m.

August 27: Hostess, Pat Shores (apatriciahores@att.net)

Me and Earl and the Dying Girl, Inside Out, Irrational Man, Mission: Impossible—Rogue Nation, Mr. Holmes, Ricki and the Flash, and Testament of Youth

September 24:

Hostess, Dot Soskin (dotsoskin@gmail.com)

For more information about this group, contact Doris Nistler (dnistler14@att.net) or Mersine Kallaos (mkallaos@prodigy.net).

PLAY READERS 3rd Monday 12:30 p.m.

September 21: Hostess, Susie Teicher

(svteicher@gmail.com)

For more information, check with Julie Triplett (julietrip@att.net).



BOOK CLUBS ~ WE WELCOME ALL READERS

Please RSVP to the hostess by the Friday before the meeting. All addresses are listed in the branch Directory. Download the 2015–16 book lists at the branch website, **Interest Groups** page. Questions? Check with the chair listed for the book group.

LITERATURE I 3rd Thursday 9/17 9:30 a.m.

Hostess, Carol Thomas (carolsuethomas@gmail.com)
A discussion of *The Children Act* by Ian McEwan will be led by Judith Brostron.
Contact Alice Crippen (jccripp@sbcglobal.net).

LITERATURE II 4th Monday, 9/28 10 a.m.

Hostess, Barb Schillhahn (baschillhahn@gmail.com)
A discussion of *All the Light we Cannot See* by Anthony Doerr will be led by Susie Teicher.
Contact Joyce Katz (joyka234@aol.com) or Erlaine Eltomi (erlaine.eltomi@att.net).

READING REALITY 2nd Tuesday 9/8 1 p.m.

Hostess, Jill Norton (jillnorton826@att.net)
A discussion of *A History of the World in Six Glasses* by Tom Standage will be led by Jill Norton.
This group reads non-fiction selections.
Contact Marcia Block (mhblock@sbcglobal.net).

BIOGRAPHY BOOK CLUB (BBC)**1st Monday 9/7 10 a.m.**

No meeting this month.
This group discusses nonfiction, especially biographies, memoirs, and autobiographies.
Contact Brenda Ernst (ernst2@charter.net).

BRIDGE GROUPS for SEPTEMBER

Contact Marilyn Fletcher
(marilynletcher597@gmail.com)
to play or sub in a group.



BASIC BRIDGE & BEYOND 9:30 a.m. Hearth Room
3rd Thursday, 9/17: Nancy Hughes

BRIDGE BUDDIES Noon Hearth Room
2nd Wednesday, 9/9: Sandy Shaner
4th Wednesday, 9/23: Sandy Shaner

BRIDGE FRIENDS 10 a.m. Hearth Room
3rd Thursday, 9/17: JoAnn Nelson

BRIDGE I 10:30 a.m. Hearth Room
1st Wednesday, 9/2: Contact Janet Ludewig

BRIDGE II 11 a.m. Dream House
3rd Tuesday, 9/15: Harriett Hirschfeld

BRIDGE III 10 a.m. Hearth Room
4th Wednesday, 9/23: Marjorie Klutho

BRIDGE IV 9:30 a.m. Kaldi's
1st Tuesday, 9/1: Nancy Hughes

BRIDGE V 9:30 a.m.
2nd Tuesday, 9/8: Pam Valentine

BRIDGE VI 1 10 a.m. Hearth Room
3rd Monday, 9/21: Nancy Russell

DUPLICATE BRIDGE I 9:50 a.m.
1st Tuesday, 9/1: Jan Loudon

DUPLICATE BRIDGE II 9:45 a.m. Hearth Room
4th Tuesday, 9/22: Nancy Russell

BEGINNERS' DUPLICATE 10:15 a.m. Hearth Room
4th Tuesday, 9/22: Kathy Childers

SATURDAY NIGHT SINGLES

This group is open to widows, divorcees, and never-marrieds who would like a Saturday night out while enjoying each other's company.

If you have a suggestion for an activity or special outing, please contact Donna Ross (victorianwhodunit@att.net) with your idea.

EXPRESSIONS 1st Tuesday 9/1 1-3 p.m.
Rockwood Bank, HWY. 109, Wildwood 63040

Good things happen when women get together!

Our first **Expressions** gathering for the 2015-2016 branch year will be an opportunity for you old-timers or new-comers to join us while beginning or finishing any work in progress that you have been wanting to complete and just haven't been able to do so.

Any activity that fills your leisure time is the perfect reason for giving your right brain the exercise it demands to stay functioning! We welcome all kinds of projects such as knitting, stamping, card making, beading, crocheting, basket weaving, or working on your picture albums.

Information about the future activities for each month will be in the newsletter, and sign-up sheets for those activities will be available at the branch meetings prior to the activity.

So, drop whatever you are doing, give yourself the reward of time and fun with other members, and share your passion and creativity for whatever makes you happy!

Contact Rosann Swaringim (rosannms@charter.net) with any questions or call, using the number listed in the *Directory*.

OUT TO LUNCH GROUP3rd Wednesday

9/16

1:30 a.m.

Carpool from Trinity at 10:45 a.m. or meet at the restaurant.


The September restaurant is being selected and will be chosen soon. Sign up at the Fall Brunch, September 10. You may also email Harriett Hirschfeld (hhirschfe@aol.com) or call her number listed in the *Directory*.

Be sure to state if you are meeting at the restaurant or carpooling. If you find you can't make it, **please** let Harriett know.

Join Us for another Great Outing

All members and friends are welcome.

~ September 2015 ~

Sun	Mon	Tue	Wed	Thu	Fri	Sat
		1 9:30 a.m. Bridge IV 9:50 a.m. Duplicate I 1 p.m. Expressions	2 10:30 a.m. Bridge I	3 9:30 a.m. Board of Directors	4	5
6	7 Golf  10 a.m. BIO Book Club	8 9:30 a.m. Bridge V 1 p.m. Reading Reality	9 Noon Bridge Buddies	10 9:30 a.m. Fall Brunch Branch Meeting \$\$Bread, Beans, & Books Newsletter Deadline	11 7-9:30 p.m. SCCAT event	12
13	14 Golf 10 a.m. Genealogy <i>Rosh Hashanah</i>	15 11 a.m. Bridge II 11:45 a.m. IBC Lunch	16 11:30 a.m. Out to Lunch	17 9:30 a.m. Basic Bridge & Beyond 9:30 a.m. Lit I 10 a.m. Bridge Friends	18	19
20	21 Golf 10 a.m. Bridge VI 12:30 p.m. Play Readers	22 9:45 a.m. Duplicate II 10:15 a.m. Beginning Duplicate	23 10 a.m. Bridge III Noon Bridge Buddies	24 10 a.m. Movie Group 1:30 p.m. ¡Adelante!	25	26
27	28 Golf 10 a.m. Lit II	29 8:45 a.m. \$\$ Visit Ste. Genevieve	30	Coming in October 10/13 ER Walk 10/14 \$\$ Genome Tour 10/29 \$\$ Pure Pleasure Plus Tour 10/24 Trivia Night		

