



AAUW Ballwin-Chesterfield (MO) Branch

National and AAUW MO Award-Winning Branch

Branching Out

November 2023
Volume 44 No. 4

AAUW Advances Gender Equity for Women and Girls
Through Research, Education, and Advocacy.

ballwin-chesterfield.com

November 9, 2023, Branch Meeting

Ballwin Golf Course Events Center

333 Holloway Rd., Ballwin 63011 Social time 9 a.m.

Business meeting 9:30 a.m.

Program 10:30 a.m.

Dr. Ana Hernandez Kent, Researcher, Institute for Economic Equity, Federal Reserve Bank of St. Louis

Ana Kent will speak on the topic of “Women in the Economy: An Undeveloped Powerhouse.”

Dr. Kent’s primary research interests include economic disparities and opportunity, wealth outcomes, class and racial biases, and the role of psychological factors in making financial decisions.



Program Vice-President Kathy Brown

President’s Corner

We hope this message finds everyone well and enjoying the cooler fall weather. AAUW B-C has been bustling with activity that will take us through the winter holidays.

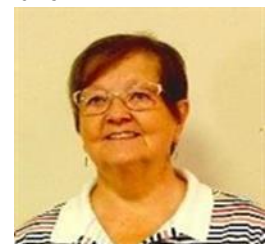
As we write this, many of our members have been preparing to attend the AAUW Central States Regional Conference at the Drury Inn at the Arch. Karen Francis and Pat Shores have been very busy working with other AAUW leaders to plan the conference which to be attended by 165 members from 16 states. Nineteen B-C members will attend the conference. Our branch will present three Swap Shop sessions to share information about DFS, Munching Matters, and STEM activities. Stay tuned for recaps and conference tales in the next issue of *Branching Out*.



Sandy Brody

Plans are underway to deliver a great Winter Party, the *Sassy Soiree*, on December 14. The St Louis Strutters will entertain and there will be games, raffles, drinks, and a delicious, boxed lunch provided by Art of Entertainment. The party takes place at the Ballwin Golf Events Center.

We continue to work on the issues that make AAUW great. The work of our national organization can only continue with support from the members through action on policy issues and contributions to the Greatest Needs Fund. Please continue to read *Branching Out* and Bulletins from National to stay informed, act when requested, and contribute when you can.



Sage Taber

Thanks to all for your cooperation, perseverance, and support.

Presidents Sandy Brody and Sage Taber

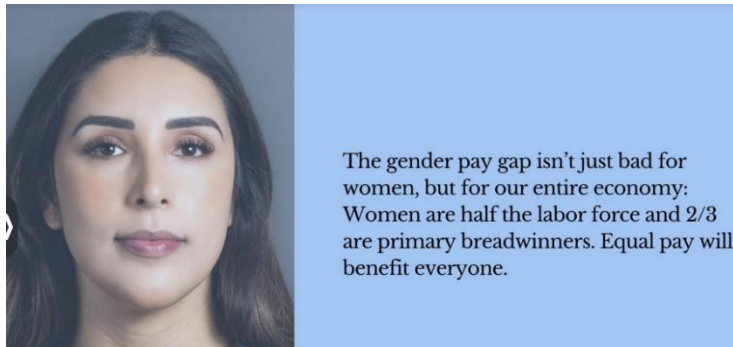
To contact any branch member, please consult your B-C Directory.

Donate Online to the AAUW Greatest Needs Fund November is Individual Giving Month ~ Thank you for supporting AAUW.

Go to aauw.org and click on the red button that says DONATE.

1. On the Donate page, choose the fund you want to support. Many Ballwin-Chesterfield members give to #9110, the Greatest Needs Fund, which allows national to use funds where they are most needed for the benefit of women and girls.
2. Click on the blue COUNT ME IN button.
3. On the Welcome page:
 - a. Log in with your email. You already have an account if you paid your dues.
 - b. Put in your AAUW password.
 - c. Click on the blue LOG IN button.
4. On Every Dollar Counts. Donations. Check Out page:
 - a. Enter the amount you want to give.
 - b. Choose your Donation Frequency.
 - c. Read the Transaction Information.
 - d. Enter your email in The Order Details.
 - e. Enter your payment type.
 - f. Fill in the Answer My Pay Methods.
 - g. Enter your Gift Total.
5. Choose I am not a robot.
6. Click on the blue CHECK OUT box.
7. Review Donation Products.
8. Click on the blue Print box.
9. You will get a confirmation email right away.

Finance Office Jean Light



Public Policy

Pay Equity is one of the major priorities of AAUW. As Missouri Citizens we can participate directly in securing pay equity and paid sick leave for our fellow citizens. First, an initiative petition is written by concerned citizens and presented to the Missouri Attorney General for approval. Then petitions are signed by registered voters and sent to the Attorney General to be voted on at the next general election. You will have the opportunity to sign this petition at branch meetings this fall. This initiative includes:

A raise in the minimum wage to \$13.75 on January 1, 2025, and \$15 by January 1, 2026, which will increase annually with the cost of living. Paid sick leave of one hour for every 30 hours worked. Some limitations apply for smaller employers.

Public Policy Director Marian Bauer

Sassy Soiree

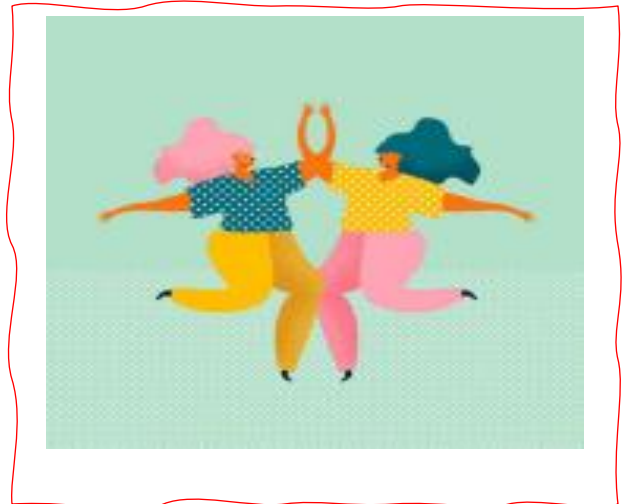
**December 14, 11 a.m.–1 p.m.
Ballwin Golf Course Events Center**

Reservation is \$25. Reservation Deadline is December 5, 2023

Food provided by the Art of Entertaining: All entrees except the salads are served with a side dish and dessert. Salad will be served with a roll and dessert.

1. Chicken Salad sandwich
2. Roast Top Beef sandwich
3. Big Bend Turkey sandwich
4. Tuna Salad sandwich
5. Red, White and Blue Salad (meatless)
6. Gluten free upon request

Reservations can be made (check only) through Sandy Kalin at the November branch meeting. If you prefer to mail your check, use Sandy's address listed in the directory. Checks can be made payable to AAUW B-C.



Wait! There's more!



- Drink options are iced tea and water
- Mimosas and Bloody Mary's (alcoholic and non-alcoholic) will be available for \$5 each
- Guests are welcome
- Entertainment to be provided by the St. Louis Strutters, plus raffles and games.
Do not miss this event!

As an added event bonus and back by popular demand—Elegant Edibles! There will be a signup sheet for Elegant Edibles at the November branch meeting. This is an opportunity for you to show off your baking skills, provide treats for the holidays and help raise some extra money for Dollars for Scholars.

Contact Michele Mangnall or Pam Kulp with questions or if you want to sign up but cannot be at the meeting in November.

Dollars for Scholars Events

Book, Puzzle, CD, DVR Sale to continue in November.

Please limit your donations to 10 items. We plan to hold the sale at most branch meetings, so you will have multiple chances to donate your items - and to purchase new ones.

Please donate current books from the last 5 years. Exceptions will be made for tried-and-true classics. No textbooks please. Children's books in good condition will be accepted no matter the age. Many thanks to so many of you that helped make the October Sale a success!

"Cabaret" Musical Performance

WU Edison Theatre 6465 Forsyth Blvd 63105
October 29 2 p.m. Free parking in WU garage
Total Cost: \$25 (\$15 to DFS)

A raucous and risqué revival of Kander and Ebb's 1967 Tony Award Winning Best Musical, Cabaret, will be performed by students at the Washington University's Performing Arts Department. The setting is 1929-30 but the message remains relevant, "What good is sitting alone in your room? Come hear the music play..." Sponsor Roz Marx

Elegant Edible Raffle Begins at November Branch Meeting

Bring some cash and good luck for a chance to win a home-made delectable dessert made by a fellow member. Raffle will be conducted right after the business meeting. We have two open months looking for a baker. Sign up at next meeting or contact Nancy Pierson.

National Weather Service Tour scheduled for November 3 is full. Contact Marian Bauer to be on the wait list in case there is a last-minute cancellation.

International Relations Lecture Series

The Ethical Society of St. Louis
9001 Clayton Road St. Louis, MO 63117
Tuesday, January 9, 2024, 10:45 - 11:30 am Cost: \$10
Carpool Available Optional lunch afterwards
Sponsors Marge Andersen and Nancy Pierson

Lecture Topic: Demographic Transition Model
How does the growing population of elderly people affect the economy and stability in the world? How does it pose an imbalance with the younger population?

The AAUW DFS Honor Roll

Honor a friend or family member. To donate 'in memory of', email Nancy Pierson the name of the honoree and the contact information to whom the acknowledgement postcard is to be sent.

Send donation checks, payable to AAUW B-C, to Finance Officer Jean Light with Honor Roll on the memo line. Dollars for Scholars donations are not tax-deductible.

AAUW has been transforming women's lives for more than a century.

ballwinchesterfield.com

Contact branch officers through <https://ballwinchesterfield-mo.aauw.net/contact-us/> or the [Directory](#).

Contact Membership Vice-Presidents April Walgren and Susie Teicher for membership information.

www.aauw.org/resources/member/why-join/

The *Branching Out* newsletter is published ten times annually.

- Board meetings: West County EMS & Fire Protection District Station 1, 223 Henry Avenue, Manchester
- The board meets on the first Thursday at 9:30 a.m. September–November and February–May.
- Branch meetings: Ballwin Golf Course Events Center.
- The branch meeting, September–April, is the second Thursday of the month 9:30 a.m.–11:30 a.m.
- The annual May Luncheon occurs on the second Thursday of May.

AAUW Ballwin-Chesterfield Board

Elected Officers

Co-Presidents Sage Taber & Sandy Brody
VP Program Janet Sloey & Kathy Brown
VP Membership April Walgren & Susie Teicher
Finance Officer Jean Light
Secretary/Archivist Mary Jermak

Elected Directors

AAUW Fund Suzanne Couch & Karen Francis
Public Policy Angela Janik & Marian Bauer

Appointed Directors

Branch Fundraising Sandy Brody & Sage Taber
Directory Ann Patrice O'Shaughnessy & Joyce Katz
Dollars for Scholars Betty Jo Hogan & Nancy Pierson
Governance Marsha Weppelman
Hospitality Carol Derington & Suzanne Couch
Newsletter Editors Mary Jermak, Joyce Katz, & Pat Shores
University Liaison Susan Shriver & Abby Roessler
Special Events

Spring Luncheon Yvonne Ward & Carol Anthony
STEM Marcia Block
Web Managers Joyce Katz & Carolyn Brown

Standing committee chairs are listed in the *Directory*.
International Relations Susie Teicher & Marge Andersen
Care Notes Joyce Katz & Joan Reed
Friday Reminder Bette Bude & Mary Kay Wolfe

Branch Interest Group Events and Calendar

Interest group social events bring together members with similar interests.

Try one! Contact an Interest Group Chair.

See <https://ballwinchesterfield-mo.aauw.net/interest-groups/> or pages 9–11 of your Directory.

Book Groups Welcome All Readers

Download book lists at

<https://ballwinchesterfield-mo.aauw.net/interest-groups/>

Literature I 3rd Thursday, 9:30 a.m.

November 16 *Horse* by Geraldine Brooks will be reviewed by Barb Mueller

Hostess Barb Mueller

Contact Alice Crippen.

Literature II 4th Monday, 11 a.m.

October 23 *Our Missing Hearts* by Celeste Ng will be reviewed by Marcia Block

November 27 *Lessons in Chemistry* by Bonnie Garmus will be reviewed by Pat Shores

Venue Hearth Room, Town & Country Commons
Contact Joyce Katz or Erlaine Eltomi.

Reading Reality 2nd Tuesday, 1 p.m.

November 14 *Hello Darkness, My Old Friend* by Stanford Greenberg will be reviewed by Jan Horner
Hostess Diane Siegel

For information about this non-fiction book group, contact Marcia Block or Mary Kay Wolfe.

AAUW ¡Adelante! 4th Thursday, 1:30 p.m.

October 26 Discussion of *The Bluest Eye* by Toni Morrison will be led by Betty Takahashi

This IBC group meets by ZOOM* and reads books written from diverse perspectives.

*Contact Patty Murray (pattymurrayaaaw@gmail.com)

Expressions 1st Tuesday, 1 p.m.

**November 7 at Holy Cross Lutheran Church
13014 Olive Blvd, 63141**

Expressions will make cards for hospitalized kids. We have supplies for everyone. Join us as we bring smiles to children. RSVP to Chairs Kay Meyer or Nancy Hutchins.

Movie Group 3rd Thursday, 11 a.m.

(Note change of date)

November 16 at Spiro's Restaurant, 1054 N Woods Mill Rd, Chesterfield, MO 63017

Contact Ann Riley or Mersine Kallaos.

Out-to-Lunch 3rd Wednesday, 11:30 a.m.

November 16 Pan D'Olive, 1603 McCausland, 63117

Please feel welcome to join this friendly group of AAUW members and guests as we try different St. Louis restaurants each month. *Contact Barb McQuitty to make a reservation by email or phone.*

Walking Group 4th Wednesday, 9:30 a.m.

Resumes in April

Get on the contact list by telling Michele you'd like to join.
Contact Michele Mangnall.

Golf Resumes in April 2024

Play 9 on Mondays, April thru October

All skill levels above beginner welcomed!

Contact Bev Wait or Elaine Frost to get on the email list.

Play Readers 3rd Mondays, 12:30 p.m.

November 20

Hostess Carol Derington

Members will be contacted with meeting details.
Contact Marilyn Fletcher to learn more and join.

Bridge Groups

If you would like to play bridge, contact a bridge group chairperson.

Social Bridge 3rd Monday, 10 a.m.

November 20, Contact Ellen Friedman or Jean Light.

Duplicate Bridge I 1st Tuesday, 11 a.m.

November 7, Contact Chris Magilligan or Elaine Frost.

Duplicate Bridge II 4th Tuesday, 11 a.m.

November 28, Contact Alice Crippen or Elaine Frost

Munching Matters: Lunch with Food for Thought

Wednesday, November 8, 2023, 11 a.m.

Mimi's Bistro and Bakery, 17240 Chesterfield Airport Rd, Chesterfield, MO

Our speaker is Marilyn Fletcher who will share her 50-year hobby of genealogical research.
Call Julie Triplett or Doris Nistler for a reservation or for further information: